

NORTHPOINT CENTER

NEC Arlington Heights Road & Rand Road
Arlington Heights, Illinois



- ❖ NorthPoint Center is one of the most active and well-recognized retail centers in the northwest suburbs of Chicago.
- ❖ The Center is unique in terms of location and visibility, with exposure on three of the area's most heavily traveled four-lane arterials.
- ❖ Jewel-Osco, Ross Dress For Less and Marshalls ensure an exceptional level of center-wide traffic.

Demographics: 2022 Estimates

3 Mile Population	132,294
Avg. Household Income	\$123,141
5 Mile Population	317,753
Avg. Household Income	\$120,618
7 Mile Population	477,875
Avg. Household Income	\$128,212

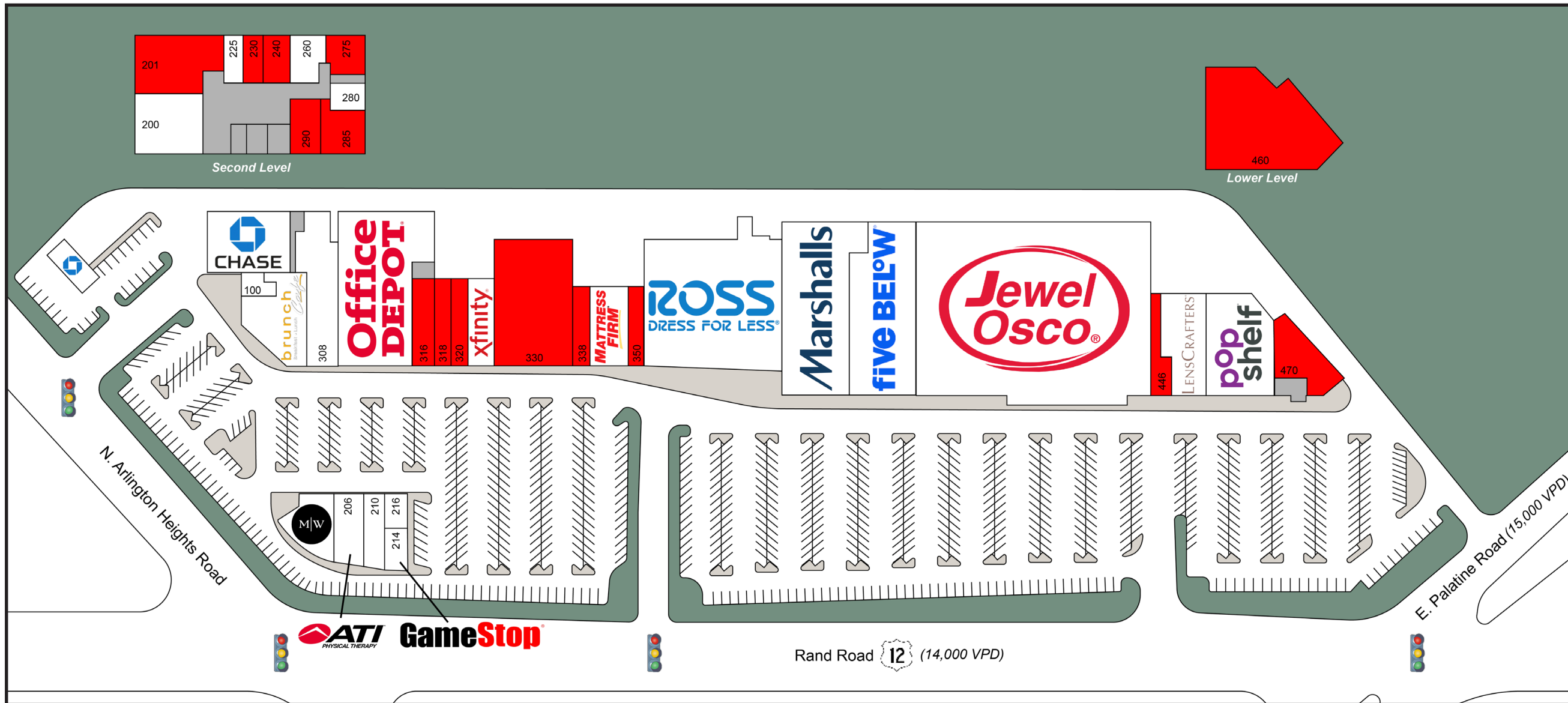
Total Rental Area Size:	276,333 SF
Total Number of Units:	37
Anchor Tenants:	Jewel-Osco, Ross Dress For Less & Marshalls
Traffic Counts:	
Arlington Heights Road	14,000 VPD
Rand Road	14,000 VPD
Palatine Road	15,000 VPD



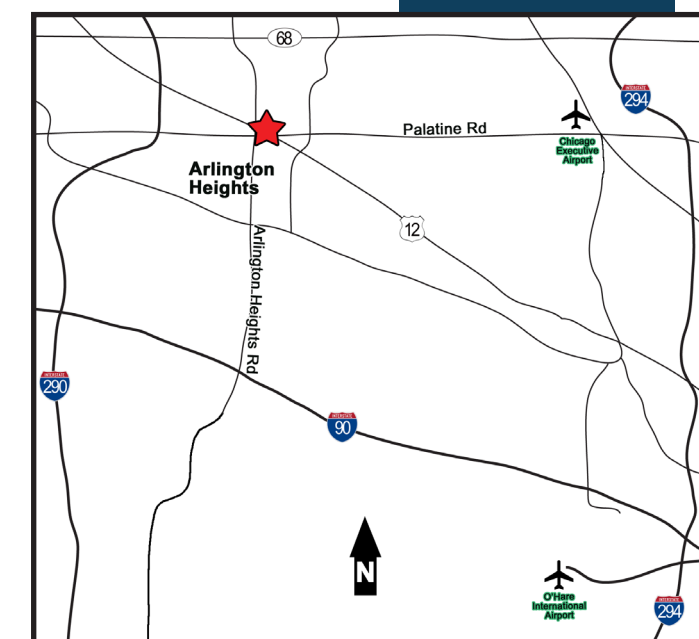
Leasing Information

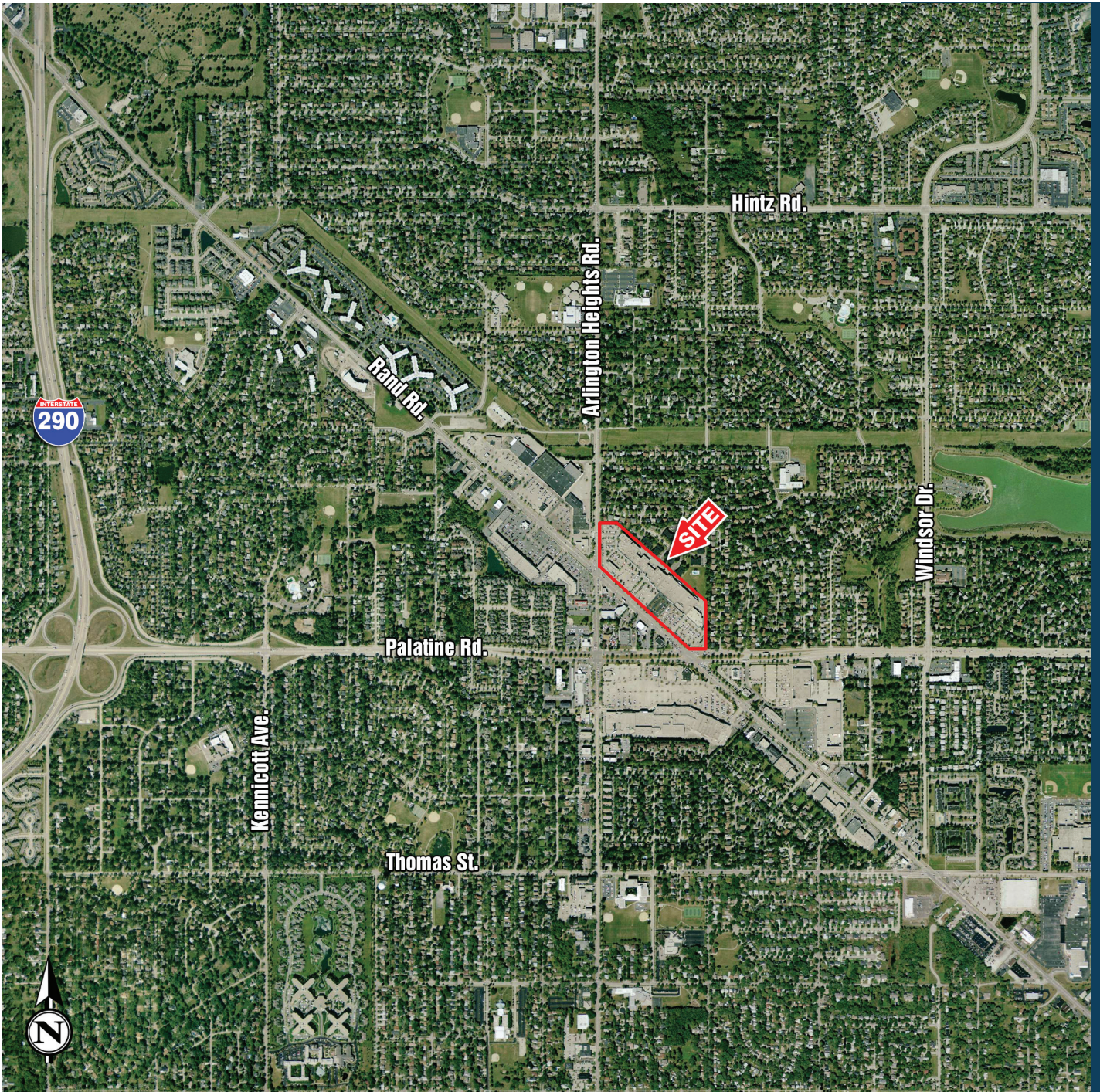
Brooke Stevens
BStevens@AmCap.com
203-327-2001

www.AmCap.com



TENANT:	SUITE ID:	SF:	TENANT:	SUITE ID:	SF:
Jewel - Osco	440/442	68,237	AVAILABLE	338	2,402
Ross Dress For Less	370	30,864	Mattress Firm	342/348	4,896
Marshall's	392	22,287	AVAILABLE	350	1,597
Five Below	430	14,141	Men's Wearhouse	202	4,743
AVAILABLE	446	2,007	ATI Physical Therapy	206	3,013
LensCrafters	450	6,574	L.Lovely Nails	210	1,804
popshelf	456	10,948	GameStop	214	1,170
AVAILABLE	460	24,931	Kidsnips	216	1,400
AVAILABLE	470	3,852	NorthPoint Oral Surgery	200	1,863
JP Morgan Chase Bank	300	7,937	AVAILABLE	201	2,758
Accuquest Hearing Center	100	1,194	NorthPoint Hair Studio	225	478
Brunch Cafe	306	6,779	AVAILABLE	230	532
Salons by JC	308	6,132	AVAILABLE	240	996
Office Depot	314	16,198	Dale Douglas, D.D.S	260	1,075
AVAILABLE	316	737	AVAILABLE	275	458
AVAILABLE	318	1,956	Roto-Rooter	280	250
AVAILABLE	320	1,500	AVAILABLE	285	650
Xfinity	324	4,450	AVAILABLE	290	468
AVAILABLE	330	15,056			
			TOTAL:	276,333	





AmCap

Corporate Headquarters
333 Ludlow Street
South Tower, 8th Floor
Stamford, CT 06902
203-327-2001

Denver Regional Office
950 South Cherry Street
Suite 1120
Denver, CO 80246
303-321-1500

www.AmCap.com

We obtained the information contained herein from sources we believe to be reliable. However, we have not verified its accuracy and make no guarantee, warranty or representation about it. It is submitted subject to the possibility of errors, omissions, change of price, rental or other conditions, prior sale, lease or financing, or withdrawal without notice. All marks displayed on this document are the property of their respective owners.

Revised 03-24