

# TABLE MESA

SWC Table Mesa Drive & Broadway Street  
Boulder, Colorado



- ❖ King Soopers, the #1 grocery chain in Colorado, occupies this free-standing building situated at one of Boulder's busiest intersections.
- ❖ The property's location in the Table Mesa area is surrounded by a dense combination of residential neighborhoods and high daytime employment centers, including the University of Colorado.

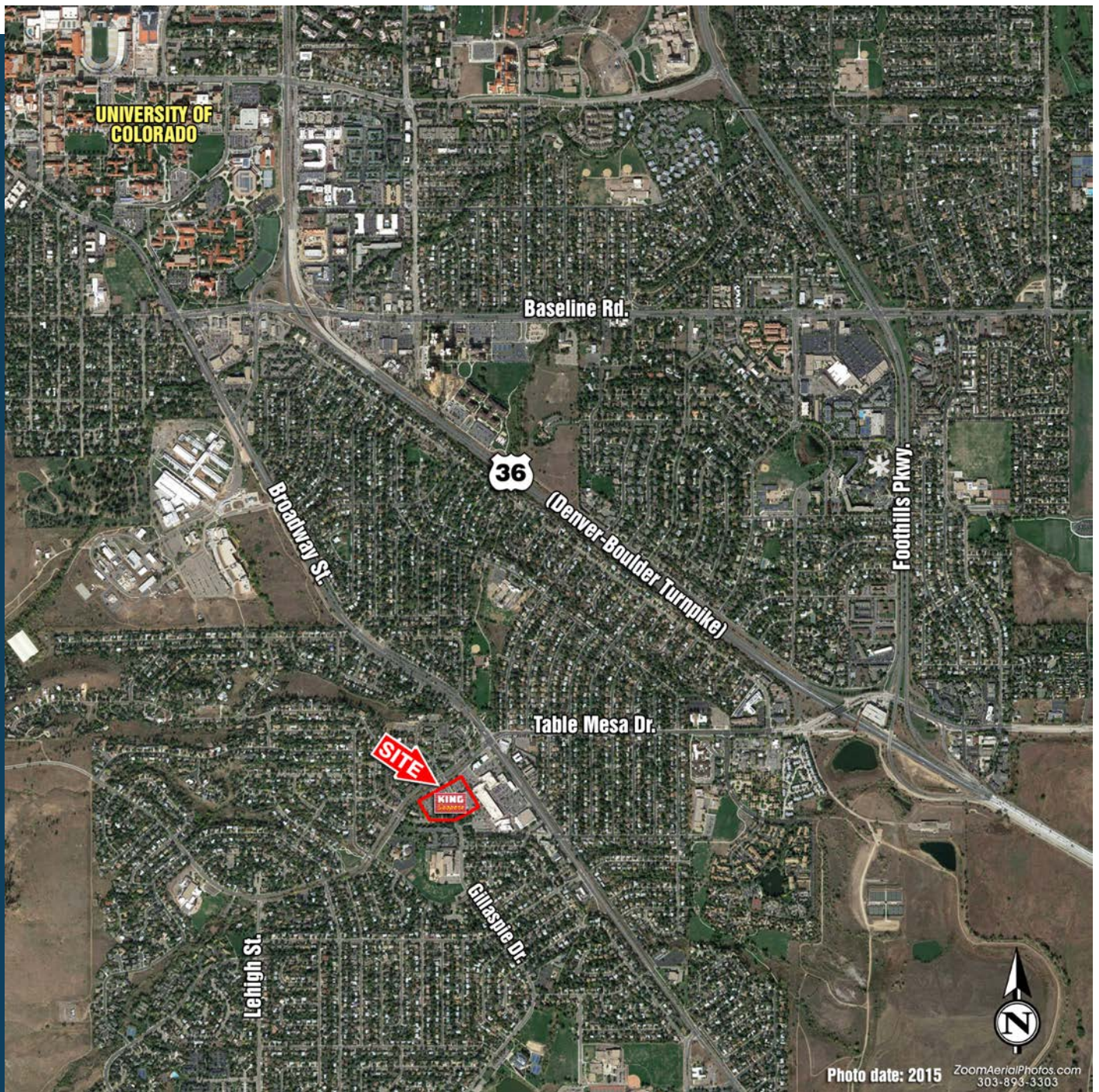
Total Rental Area Size:	58,862 SF	Traffic Counts:	
Anchor Tenant:	King Soopers	Table Mesa Drive	18,000 VPD
		Broadway Street	34,000 VPD
Primary Demographics:	1 Mile	3 Mile	5 Mile
2018 Population	16,311	71,147	111,564
2023 Population	17,100	74,495	117,044
Projected Growth	4.84%	4.71%	4.91%
2018 AHI	\$135,236	\$101,201	\$117,460

## AmCap INCORPORATED

Corporate Headquarters  
333 Ludlow Street  
South Tower, 8th Floor  
Stamford, CT 06902  
203-327-2001

Leasing Information  
AmCap Properties, Inc.  
950 South Cherry Street, 1120  
Denver, CO 80246  
303-321-1500

[www.AmCap.com](http://www.AmCap.com)



We obtained the information contained herein from sources we believe to be reliable. However, we have not verified its accuracy and make no guarantee, warranty or representation about it. It is submitted subject to the possibility of errors, omissions, change of price, rental or other conditions, prior sale, lease or financing, or withdrawal without notice. All marks displayed on this document are the property of their respective owners.